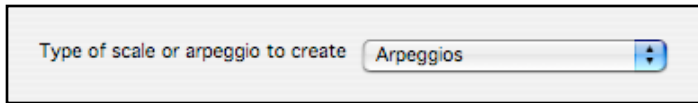


3. Add an arpeggio and then repeat the scale in a down/up pattern. Use the same plug-in tool, but change your options so that you add an “arpeggio” and then add a “Down then Up” scale. Also set “Start in Octave” to “Auto.” It should append these automatically to the end of the score as you complete each step.



4. The final flute version is shown below. Added more articulations and a bit of an arpeggio to finish off the end of the Etude. Save the file as “bandEtude_Flute.sib.”



5. Use the Arrange Tool to create concert band version. We will now use the Sibelius Arrange Tool to expand the flute etude and score it for full concert band. Follow these steps:

- 5.1. Edit > Select > Select All. Then, Edit > Copy. This puts a copy of the flute part in the clipboard.
- 5.2. File > New. Use the manuscript wizard to create a new score. Choose the following options:
 - Concert Band - Small
 - 4/4 time
 - MM marking of 120
 - Eb Major
 - Title “Band Warmup Etude 1”

You should now have an empty band score with just a small or basic set of band instruments.

- 5.3. Use the Arrange Tool. Select the first measure down over all the instruments. To do this, hold the CTRL (Command for Mac) key down and click the first Flute measure; a double-line, purple box should outline all of the instruments in the 1st measure.

Then Notes > Arrange. (Remember, the flute part is still in the clipboard.) From the Arrange menu choose “Standard Arrangement” then OK. [In Sibelius 5 use View > Panorama to easily see and move through the parts.] The flute part should expand to all of the instruments. Flip Notes > Transposing score to see that the parts were automatically transposed to the correct keys for the transposing instruments.

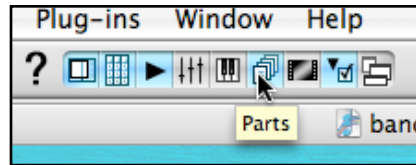
- 5.4. Adjusting for Instrument Ranges. Sibelius tracks “comfortable” and “professional” ranges for instruments. When notes exceed the “comfortable” range they become dark red; exceeding the “professional range,” bright red (shown as grey notes here). Open the Properties Window and click on the Staves tab to see the range settings. [In Sibelius 5 House Styles > Edit In-

struments to see and adjust instrument ranges.] You will want to transpose or alter the scales for some instruments where their notes are indicated in red. Use Notes > Transpose to help drop groups of notes an octave.



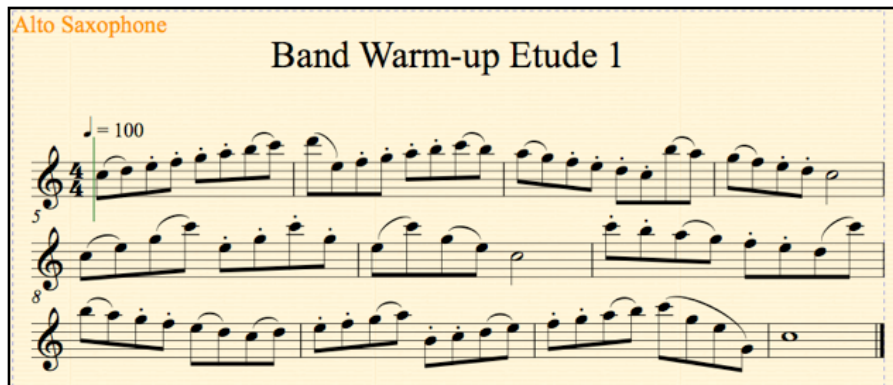
5.5. Fix Ranges and Add Percussion. The copy of the score provided (last page) shows an attempt to adjust ranges and to add a percussion part. Some additional editing can be done. To add snare and bass drum, put the snare in Voice 1 and the bass drum in Voice 2 (green notes); if you need to flip stems (Edit > Flip or press the X key shortcut).

5.6. Generate Parts. Click on the Parts icon. A Parts Window will appear. Click on any of the parts to reveal the manuscript for the part. Make adjustments as needed. If you change notes, for example, the notes will automatically



Parts	
Name	Copies
Flute Oboe	1
Clarinet in Bb	1
Alto Saxophone	1
Tenor Saxophone	1
Trumpet in Bb	1
Horn in F	1
Trombone Baritone	1
Tuba	1
Percussion	1

get changed in the score. This is the powerful feature of dynamically linked parts in Sibelius. If you adjust expressions, text, or dynamic markings, they will only be made in the part (the color turns to yellow to indicate a non-linked change). Go through and clean up all the parts. When you are done, Print the score and the parts.



Band Warm-up Etude 1

♩ = 100

Flute
Oboe

Clarinet in Bb

Alto Saxophone

Tenor Saxophone

Trumpet in Bb

Horn in F

Trombone
Baritone

Tuba

Percussion

Fl.
Ob.

Cl.

A. Sax.

T. Sax.

Tpt.

Hr.

Tbn.
Bar.

Tba.

Perc.